

hospitality design

august 2015 hospitalitydesign.com

the products issue

HDexpo
a hospitality design event

projects the press hotel

fit to print

A newspaper headquarters
turns boutique

By KATHLEEN KERVIN
Photography by IRVIN SERRANO



The newspaper industry may have been in flux for the past few years, but a new hotel in Portland, Maine, pays homage to the periodical in more ways than one. Located in the building that housed the 1862-founded *Portland Press Herald* from 1923 to 2010 in the city's Old Port district, the 110-room Press Hotel, part of Marriott's Autograph Collection, features interiors channeling traditional printing and journalism with a contemporary spin by New York-based Stonehill & Taylor—who collaborated with locally based Archetype Architects on the conversion.



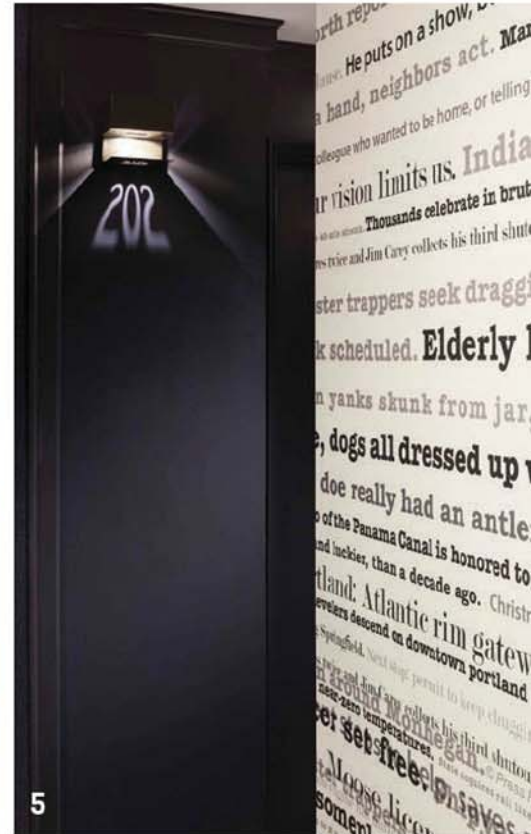
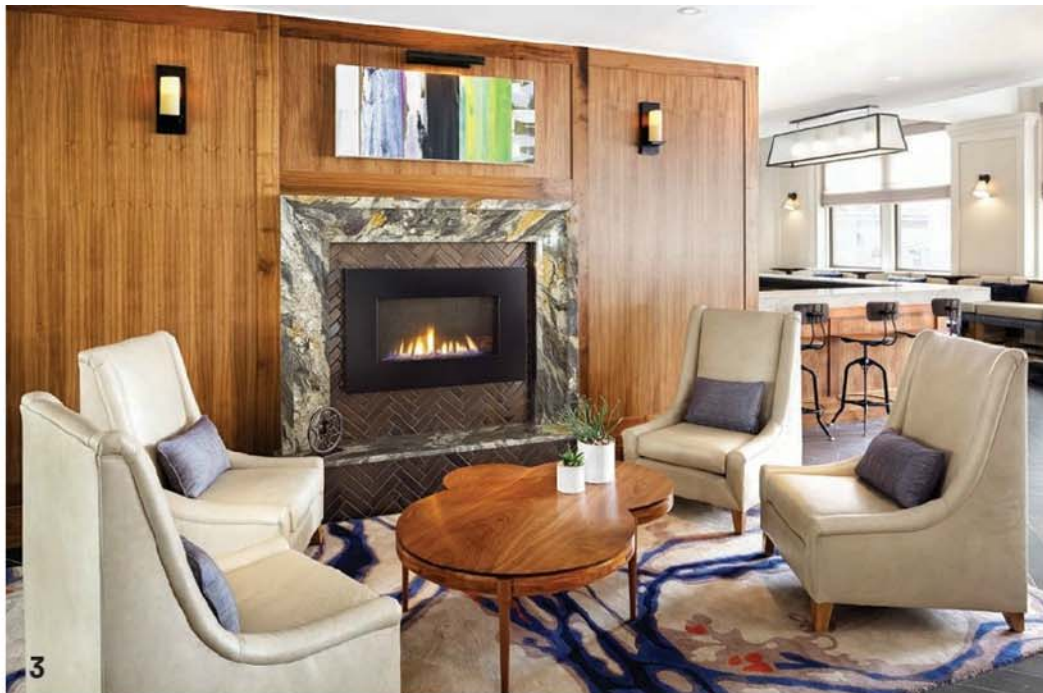
1. A large dimensional art piece made of ink-stained block type letters is a focal point behind the Press Hotel's reception desk.



2. A two-and-a-half story installation of cascading typewriters links the lobby level to the gallery and meeting space below.

3. A lounge off the Inkwell bar features a raised marble and glass fireplace surrounded by walnut millwork.

4. A seating area in the lobby is marked by pops of orange and handmade metal tables with old *Press Herald* issues showcased under glass.



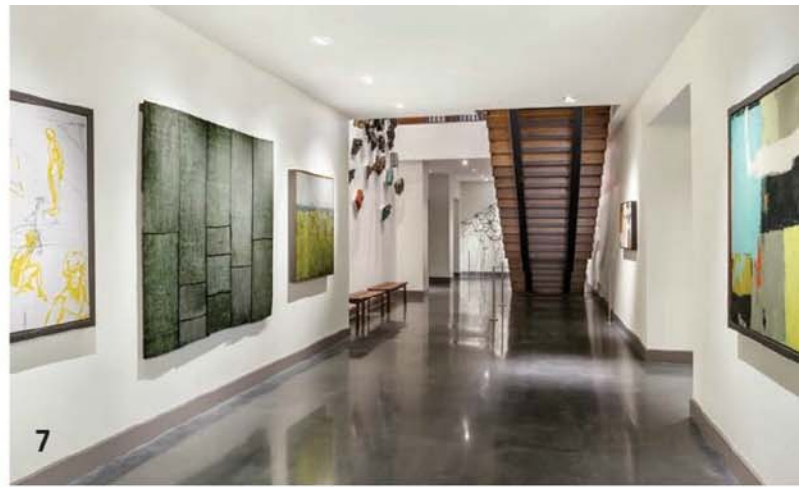
In the lobby, for instance, guests are greeted by paned windows done in wood to resemble old typeset press boxes, while neutral tones nod to newsprint and saturated, inky tones of greige and navy are highlighted with pops of orange. Elsewhere, a carpet with a spilled-ink pattern lays on top of slate-mimicking porcelain floors, while another is a take on “round typewriter keys as if they were scattered on the floor,” says Tory Knoph, interior designer at Stonehill & Taylor. “We didn’t want to get too literal.” More direct are the six tables made by a Portland metal craftsman in the lobby lounge that

showcase pages from the *Press Herald* spanning 150 years—from the first paper ever printed to the last edition published in the building—under glass.

Stretching behind the reception desk, another locally made wooden art piece—exemplifying Stonehill & Taylor and developer and owner Jim Brady’s commitment to feature Maine-made artwork—is crafted of large type letters stained in various colors (the same artist, Portland woodworker Matt Hutton of Studio 24b, also devised the wayfinding signs for elevator lobbies). A marble and



6



7

5. In guestroom corridors, newspaper-inspired wallcoverings are created from *Press Herald* headlines.

6. Headboard walls in guestrooms are a saturated, inky blue, and hardwood floors hark back to the era when the building was constructed.

7. Down a floating walnut stair, the hotel's lower-level space is set up like an art gallery with polished concrete floors and pieces by local artists.

glass fireplace in the lobby's Inkwell bar, fronted by a Hutton-created coffee table, is surrounded by walnut millwork—a wood repeated on columns throughout—and slightly raised to create an inviting view for entering guests, particularly during cold winter months.

A floating walnut staircase backed by a wall installation of cascading typewriters ("We originally wanted to change or paint them," Knoph says, "but leaving them alone let them tell their own story and history") leads down to the space outside several library-style meeting rooms that's intentionally set up like an art gallery. Here, polished concrete floors contrast white walls adorned with an "eclectic collection that is generally more on the abstract side, a little more contemporary in its style," explains Brady, who chose many of the pieces himself or through "an iterative process" with the design team. Adds Knoph: "[We wanted the] ability to switch [the art] out to feel more locally hand-selected, and working with the artists and hearing their stories was very inspiring."

Guestrooms take inspiration from a 1920s writer's office, featuring wood floors, herringbone rugs, custom vintage-style desks, more orange hints, and glass doors in the bathrooms reminiscent of old newspaper offices. The penthouse suite, the corner of which was once the office of former *Press Herald* publisher Guy Gannett (whose company ran the publication from 1921 to 1928), features private access to a rooftop with a view of the city's Munjoy Hill neighborhood and Casco Bay. hd

stonehilltaylor.com; archetype-architects.com; thepresshotel.com

The Press Hotel Portland, Maine

Owner
Jim Brady, Press Hotel LLC

Management Company
Trust Hospitality

Architecture Firm
Archetype Architects, Portland, Maine

Interior Design Firm
Stonehill & Taylor, New York

Interior Design Project Team
Michael Suomi, Sherry Dennis, Tory Knoph, Xyrus Diego, Carmen Koller, Laura Plasberg, Ariana Holland, Cinthya Toledo, and Tracy Ong

Contractor
Wright-Ryan Construction

Purchasing Firm
Neil Locke & Associates

Lighting Consultants
Kugler Ning Lighting Design

Art Sourcing
Soho Myriad, Stonehill & Taylor, Jim Brady, and Maine College of Art

GUESTROOMS

Bath
Watermark and Kohler

Casegoods
Bryan Ashley

Textiles
Opuzen, Kravet Contract, Valley Forge Fabrics, P/Kaufmann Contract, and Moore & Giles

Flooring
Paul G. White, AP Designs, and Innovative Carpets

Lighting
Mario Industries

Mirrors
Mirror Image

Drapery
County Draperies

Seating
Custom Contract Furnishings

Wallcoverings
Koroseal and MDC

Wall Tapestries
Angela Adams

PUBLIC SPACES

Casegoods
Bryan Ashley

Textiles
Opuzen, Kravet Contract, Valley Forge Fabrics, P/Kaufmann Contract, Demar Leather Company, and Moore & Giles

Flooring
Paul G. White and Caccese Collection

Lighting
Renaissance Contract Lighting

Drapery
County Draperies

Seating
Custom Contract Furnishings

Wallcoverings
Koroseal, MDC, Innovations, and Wolf-Gordon

Artwork and Custom Pieces
Nelson Metal Fabrication, Angela Adams, and Studio 24b